



---

## PATIENT & CAREGIVER EDUCATION

# About Your Prostate Ablation Procedure

This information will help you get ready for your prostate ablation procedure at MSK. It will also help you understand what to expect after your procedure.

## About your prostate

Figure 1. Male reproductive system

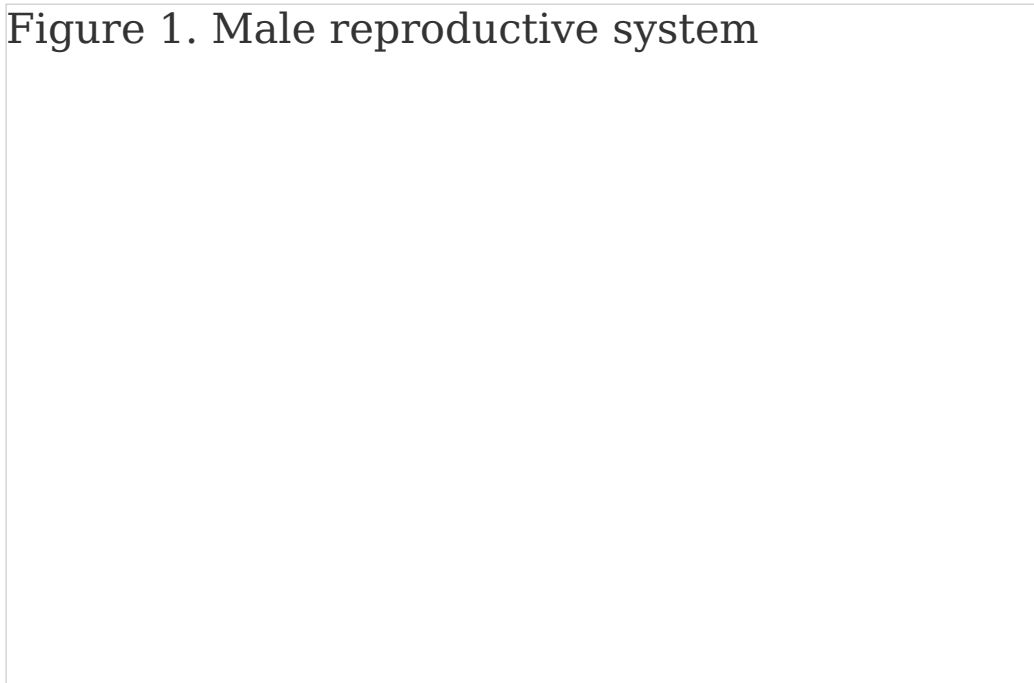


Figure 1. Male reproductive system

- Your **prostate** is a small, firm gland about the size of a walnut. It's in front of your rectum, below your bladder (see Figure 1). Your prostate works with other glands in your body to make semen.

- Your **urethra** is a tube that carries urine (pee) from your bladder, through your penis, and out of your body.
- Your **seminal vesicles** are small glands near your prostate that make the fluid in semen.
- Your **perineum** is the space between your scrotum and anus.

## About your prostate ablation procedure

Prostate ablation is a procedure used to treat prostate cancer. During a prostate ablation procedure, energy (such as heat, cold, lasers, or chemicals) is used to kill the cancer cells. The energy may also destroy some of the surrounding normal prostate tissue.

You'll get anesthesia (medication to make you sleep during your procedure) before your procedure unless your healthcare provider tells you otherwise. Once you're asleep, you'll be positioned on your back with your legs supported and raised above your hips with your knees bent.

Your healthcare provider may place a cystoscope (small, flexible camera) through your urethra to your prostate and bladder after you're asleep, before your ablation. This is to check for anything that might affect your procedure.

Prostate ablation can be done with a needle ablation or with high-frequency ultrasound energy. Your healthcare

provider will talk with you about which type of ablation is best for you.

## **Needle ablation**

If you're having a needle ablation, a small ultrasound probe will be put into your rectum. The ultrasound probe uses sound waves to show your prostate on a video screen. Your healthcare provider will use these images as they guide small needles into your prostate. The needles will be held in place by a template, which is a small, square piece of plastic with many holes in it.

Once the needles are in place, your healthcare provider will use them to deliver the treatment to your prostate. The treatment will take 20 to 30 minutes.

After the treatment is finished, the needles and probe will be taken out and you'll be taken to the recovery room.

## **Ablation through high-frequency ultrasound energy**

If you're having ablation through high-frequency ultrasound energy, a small ultrasound probe will be placed into your rectum so your healthcare provider can see your prostate.

After your treatment is completed, the probe will be taken out and you'll be taken to the recovery room.

# Getting ready for your procedure

You and your care team will work together to get ready for your procedure. Help us keep you safe by telling us if any of these things apply to you, even if you're not sure.

- I take an anticoagulant (blood thinner), such as:

- Aspirin
- Heparin
- Warfarin (Jantoven<sup>®</sup>, Coumadin<sup>®</sup>)
- Clopidogrel (Plavix<sup>®</sup>)
- Enoxaparin (Lovenox<sup>®</sup>)
- Dabigatran (Pradaxa<sup>®</sup>)
- Apixaban (Eliquis<sup>®</sup>)
- Rivaroxaban (Xarelto<sup>®</sup>)

These are examples of medicines. There are others.

Be sure your healthcare provider knows all the medicines you're taking.

- I take an SGLT2 inhibitor, such as:

- Canagliflozin (Invokana<sup>®</sup>)
- Dapagliflozin (Farxiga<sup>®</sup>)
- Empagliflozin (Jardiance<sup>®</sup>)
- Ertugliflozin (Steglatro<sup>®</sup>)

- I take prescription medicine(s), including patches and creams. A prescription medicine is one you can only get

with a prescription from your healthcare provider.

- I take over-the-counter medicine(s), including patches and creams. An over-the-counter medicine is one you can buy without a prescription.
- I take dietary supplements, such as herbs, vitamins, minerals, or natural or home remedies.
- I have a pacemaker, automatic implantable cardioverter-defibrillator (AICD), or other heart device.
- I have sleep apnea.
- I have had a problem with anesthesia (A-nes-THEE-zhuh) in the past. Anesthesia is medicine to you sleep during a surgery or procedure.
- I'm allergic to certain medicines or materials, including latex.
- I'm not willing to receive a blood transfusion.
- I drink alcohol.
- I smoke or use an electronic smoking device, such as a vape pen or e-cigarette.
- I use recreational drugs, such as marijuana.

## **About drinking alcohol**

It's important to talk with your healthcare providers about how much alcohol you drink. This will help us plan your care.

If you drink alcohol regularly, you may be at risk for problems during and after your procedure. These include bleeding, infections, heart problems, and a longer hospital stay.

If you drink alcohol regularly and stop suddenly, it can cause seizures, delirium, and death. If we know you're at risk for these problems, we can prescribe medications to help prevent them.

Here are things you can do before your procedure to keep from having problems.

- Be honest with your healthcare providers about how much alcohol you drink.
- Try to stop drinking alcohol once your procedure is planned. Tell your healthcare provider right away if you:
  - Get a headache.
  - Feel nauseous (like you're going to throw up).
  - Feel more anxious (nervous or worried) than usual.
  - Cannot sleep.

These are early signs of alcohol withdrawal and can be treated.

- Tell your healthcare provider if you cannot stop drinking.
- Ask your healthcare provider questions about drinking

and procedures. All your medical information will be kept private, as always.

## **About smoking**

If you smoke, you can have breathing problems when you have a procedure. Stopping for even a few days before your procedure can help.

Your healthcare provider will refer you to our [Tobacco Treatment Program](#) if you smoke. You can also reach the program by calling 212-610-0507.

## **About sleep apnea**

Sleep apnea is a common breathing problem. If you have sleep apnea, you stop breathing for short lengths of time while you're asleep. The most common type is obstructive sleep apnea (OSA). With OSA, your airway becomes fully blocked during sleep.

OSA can cause serious problems during and after a procedure. Tell us if you have or think you might have sleep apnea. If you use a breathing device, such as a CPAP machine, bring it on the day of your procedure.

## **Within 30 days of your procedure**

### **Presurgical testing (PST)**

You'll have a PST appointment before your procedure. You'll get a reminder from your healthcare provider's

office with the appointment date, time, and location.

You can eat and take your usual medicine(s) the day of your PST appointment.

It's helpful to bring these things to your appointment:

- A list of all the medicines you're taking, including prescription and over-the-counter medicines, patches, and creams.
- Results of any medical tests done outside of MSK in the past year, if you have them. Examples include results from a cardiac stress test, echocardiogram, or carotid doppler study.
- The names and telephone numbers of your healthcare providers.

You'll meet with an advance practice provider (APP) during your PST appointment. They work closely with MSK's anesthesiology (A-nes-THEE-zee-AH-loh-jee) staff. These are doctors with special training in using anesthesia during a procedure.

Your APP will review your medical and surgical history with you. You may have tests to plan your care, such as:

- An electrocardiogram (EKG) to check your heart rhythm.
- A chest X-ray.
- Blood tests.



Your APP may recommend you see other healthcare providers. They'll also talk with you about which medicine(s) to take the morning of your procedure.

## **Fill out a Health Care Proxy form**

If you have not already filled out a Health Care Proxy form, we recommend you do now. If you already filled one out or have any other advance directives, bring them to your next appointment.

A health care proxy is a legal document. It says who will speak for you if you cannot communicate for yourself. This person is called your health care agent.

- To learn about health care proxies and other advance directives, read *Advance Care Planning for People With Cancer and Their Loved Ones* ([https://sandbox18.mskcc.org/pe/advance\\_care\\_planning](https://sandbox18.mskcc.org/pe/advance_care_planning)).
- To learn about being a health care agent, read *How to Be a Health Care Agent* ([https://sandbox18.mskcc.org/pe/health\\_care\\_agent](https://sandbox18.mskcc.org/pe/health_care_agent)).

Talk with a member of your care team if you have questions about filling out a Health Care Proxy form.

## **Do physical activity**

Doing physical activity will help your body get into its best condition for your procedure. It will also make your

recovery faster and easier.

Try to do physical activity every day. Any activity that makes your heart beat faster, such as walking, swimming, or biking, is a good choice. If it's cold outside, use stairs in your home or go to a mall or shopping center

## **7 days before your procedure**

### **Follow your healthcare provider's instructions for taking aspirin**

Aspirin can cause bleeding. If you take aspirin or a medicine that has aspirin, you may need to change your dose or stop taking it 7 days before your procedure. Follow your healthcare provider's instructions. **Do not stop taking aspirin unless they tell you to.**

To learn more, read *How To Check if a Medicine or Supplement Has Aspirin, Other NSAIDs, Vitamin E, or Fish Oil* (<https://sandbox18.mskcc.org/pe/check-med-supplement>).

### **Stop taking vitamin E, multivitamins, herbal remedies, and other dietary supplements**

Vitamin E, multivitamins, herbal remedies, and other dietary supplements can cause bleeding. Stop taking them 7 days before your procedure. If your healthcare provider gives you other instructions, follow those instead.

To learn more, read *Herbal Remedies and Cancer*

## *Treatment*

([https://sandbox18.mskcc.org/pe/herbal\\_remedies](https://sandbox18.mskcc.org/pe/herbal_remedies)).

## **2 days before your procedure**

### **Stop taking nonsteroidal anti-inflammatory drugs (NSAIDs)**

NSAIDs, such as ibuprofen (Advil® and Motrin®) and naproxen (Aleve®), can cause bleeding. Stop taking them 2 days before your procedure. If your healthcare provider gives you other instructions, follow those instead.

To learn more, read *How To Check if a Medicine or Supplement Has Aspirin, Other NSAIDs, Vitamin E, or Fish Oil* (<https://sandbox18.mskcc.org/pe/check-med-supplement>).

### **Start taking tamsulosin (Flomax®)**

Your healthcare provider will give you a prescription for tamsulosin to help you urinate (pee) after your procedure. Start taking the tamsulosin 2 days before your procedure or as directed by your healthcare provider.

### **Arrange for someone to take you home**

You must have a responsible care partner take you home after your procedure. A responsible care partner is someone who can help you get home safely. They should be able to contact your care team if they have any concerns. Make sure to plan this before the day of your procedure.

If you don't have a responsible care partner to take you home, call one of the agencies below. They'll send someone to go home with you. There's a charge for this service, and you'll need to provide transportation. It's OK to use a taxi or car service, but you still need a responsible care partner with you.

### **Agencies in New York**

VNS Health: 888-735-8913

Caring People: 877-227-4649

### **Agencies in New Jersey**

Caring People: 877-227-4649

## **1 day before your procedure**

### **Follow the diet your healthcare provider recommends**

Depending on the type of ablation procedure you're having, you may need to follow a light diet or a low residue diet. Your healthcare provider will check the box below next to the diet you should follow. Start following it the morning of the day before your procedure.

#### ☐ **Light diet**

Follow a light diet, such as small sandwiches, eggs, toast, crackers, soup, or cereal. Limit the amount of dairy products and avoid fried foods and foods with a lot of seasoning.

#### ☐ **Low-residue diet**

Follow a low residue diet. This diet limits high-fiber

foods, such as whole grain breads and cereals, nuts, seeds, and raw or dried fruits and vegetables. You should also limit the amount of dairy products you have.

### **Start taking antibiotics, if needed**

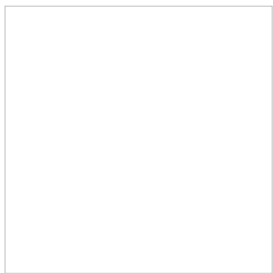
If your healthcare provider gives you a prescription for antibiotics, start taking them 1 day before your procedure.

### **Note the time of your procedure**

A staff member will call you after 2 p.m. the day before your procedure. If your procedure is scheduled for a Monday, they'll call you on the Friday before. If you do not get a call by 7 p.m., call 212-639-5014.

The staff member will tell you what time to arrive for your procedure. They'll also remind you where to go.

### **Instructions for eating and drinking: 8 hours before your arrival time**



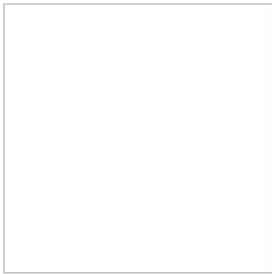
- **Stop eating 8 hours before your arrival time, if you have not already.**
  - Your healthcare provider may tell you to stop eating earlier. If they do, follow their instructions.
- 8 hours before your arrival time, do not eat or drink anything except these clear liquids:
  - Water.

- Soda.
- Clear juices, such as lemonade, apple, and cranberry juices. Do not drink orange juice or juices with pulp.
- Black coffee or tea (without any type of milk or creamer).
- Sports drinks, such as Gatorade®.
- Gelatin, such as Jell-O®.

You can keep having these until 2 hours before your arrival time.

## **The morning of your procedure**

### **Instructions for drinking: 2 hours before your arrival time**



**Stop drinking 2 hours before your arrival time.** This includes water.

### **Take your medications**

If your healthcare provider told you to take certain medications the morning of your procedure, take only those medications with a sip of water. Depending on what medications you take, this may be all, some, or none of your usual morning medications.

## **Give yourself a saline enema**

Give yourself a saline enema (such as a Fleet® saline enema) the morning of your procedure. Follow the directions on the box. You can buy this at your local pharmacy.

## **Things to remember**

- Wear comfortable, loose-fitting pants with an elastic waistband.
- Don't put on any lotion, cream, deodorant, makeup, powder, perfume, or cologne.
- Don't wear any metal objects. Remove all jewelry, including body piercings. The equipment used during your procedure can cause burns if it touches metal.
- Leave valuable items (such as credit cards, jewelry, and your checkbook) at home.
- Before you're taken into the operating room, you'll need to remove your hearing aids, dentures, prosthetic device(s), wig, and religious articles.
- If you wear contacts, wear your glasses instead. Wearing contact lenses during your procedure can damage your eyes.

## **What to bring**

- Your breathing device for sleep apnea (such as your CPAP device), if you have one.
- Your Health Care Proxy form and other advance directives, if you have completed them.
- A case for your personal items (such as eyeglasses, hearing aid(s), dentures, prosthetic device(s), wig, and religious articles), if you have one.
- This guide. Your healthcare team will use this guide to teach you how to care for yourself after your procedure.

## **Once you're in the hospital**

You'll be asked to say and spell your name and birth date many times. This is for your safety. People with the same or a similar name may be having a procedure on the same day.

When it's time to change for your procedure, you'll get a hospital gown, robe, and non-skid socks to wear.

## **Meet with a nurse**

You'll meet with a nurse before your procedure. Tell them the dose of any medications you took after midnight (12 a.m.) and the time you took them. Make sure to include prescription and over-the-counter medications, patches, and creams.

Your nurse may place an intravenous (IV) line in one of



your veins, usually in your arm or hand. If your nurse does not place the IV, your anesthesiologist will do it in the procedure room.

## **Meet with an anesthesiologist**

You will also meet with an anesthesiologist (A-nes-THEE-zee-AH-loh-jist). An anesthesiologist is a doctor with special training in anesthesia. They will give you anesthesia during your procedure. They will also:

- Review your medical history with you.
- Ask if you've had any problems with anesthesia in the past. This includes nausea (feeling like you're going to throw up) or pain.
- Talk with you about your comfort and safety during your procedure.
- Talk with you about the kind of anesthesia you'll get.
- Answer questions you have about anesthesia.

## **Get ready for your procedure**

You'll either walk into the operating room or be taken in on a stretcher. A member of the operating room team will help you onto the operating bed. Once you're comfortable, your anesthesiologist will give you anesthesia through your IV line and you'll fall asleep. You'll also get fluids through your IV line during and after your procedure.

After you're fully asleep, a breathing tube will be placed

through your mouth and into your windpipe to help you breathe. You'll also have a urinary (Foley) catheter placed to drain urine from your bladder.

Your breathing tube is usually taken out while you're still in the operating room.

## **After your procedure**

A nurse will be monitoring your body temperature, pulse, blood pressure, and oxygen levels. You may be getting oxygen through a thin tube that rests below your nose or a mask that covers your nose and mouth.

### **Managing your pain**

For the first 6 to 8 hours after your procedure, apply ice packs to your perineum for 20 minutes on and then 20 minutes off. This helps reduce discomfort, swelling, and bruising. Don't put the ice packs right on your skin.

You'll probably have some pain for about 1 to 2 days after your procedure. You can take an over-the-counter pain reliever such as acetaminophen (Tylenol®) or ibuprofen (Advil®) to help with any discomfort.

### **Tubes and drains**

You'll have a urinary catheter in your bladder. This is so your care team can keep track of how much urine you're making. You might be discharged with the catheter still in place. If you are, your healthcare provider will tell you

when to take it out. They'll give you written instructions. You can also watch the video *How to Remove your Urinary (Foley) Catheter* ([https://sandbox18.mskcc.org/pe/remove\\_foley](https://sandbox18.mskcc.org/pe/remove_foley)).

## **Leaving the hospital**

You'll go home the same day as your procedure. It's important to have a responsible care partner to take you home.

## **After you leave the hospital**

- Follow your healthcare provider's instructions for taking your antibiotics and tamsulosin (Flomax).
- Don't shower for the first 24 hours after your procedure. After 24 hours, you can go back to showering as usual. Don't take a tub bath or submerge your lower body in water for 2 weeks after your procedure.
- Don't lift anything heavier than 20 pounds (9 kilograms) for at least 48 hours (2 days) after your procedure. Your healthcare provider will tell you if you need to wait longer than 48 hours.

## **Changes in urination**

- Your urine may be pink tinted or have small amounts of blood in it for a few days after your procedure. If you have any heavy bleeding or blood clots in your catheter, call your healthcare provider.

- You may have a burning feeling when you urinate for 1 to 2 weeks after your procedure. Your healthcare provider will give you a prescription for medication to help with this, if needed.
- Your urine may flow more slowly than usual for about 2 to 3 weeks after your procedure.
- You may urinate more often than usual for up to 6 weeks after your procedure.

## **Swelling, bruising, or bleeding**

- Your scrotum and the skin beneath it may have bruising and swelling after your procedure. This usually goes away within a few days, but it sometimes lasts for 2 to 3 weeks. To help with bruising and swelling, hold an ice pack on your perineum for 20 minutes, then take it off for 20 minutes. Repeat as needed. Don't put the ice pack right on your skin.
- If you had a needle ablation, you may have light bleeding from your puncture sites for 1 to 2 days after your procedure. If you do, apply steady pressure with a clean, dry washcloth or gauze to the area for 5 minutes. If the bleeding becomes heavy or doesn't stop, call your healthcare provider.
- You may have tenderness in your perineum. This may continue for several days after your procedure. If the area becomes very red, tender, or swollen, call your

healthcare provider.

- You may have a pink-tinted fluid coming from your urethra for a few days or weeks after your procedure. This is temporary. It's caused by swelling in your prostate from the treatment.

## **Changes in sexual function**

- Your semen may contain a small amount of blood for several weeks.
- You may ejaculate less semen than you did before your procedure. This is permanent.
- You may have changes in erectile function (your ability to get an erection). Your healthcare provider will talk with you about this.

## **When to call your healthcare provider**

Call your healthcare provider if you have:

- New or worsening shortness of breath
- A fever of 101 °F (38.3 °C) or higher
- Chills
- Heavy bleeding or blood clots in your catheter
- Pain or tenderness in your testicles
- Pain that doesn't get better with your medications
- Any new symptom or physical change

# **Support services**

## **MSK support services**

### **Admitting Office**

212-639-7606

Call if you have questions about your hospital admission, such as asking for a private room.

### **Anesthesia**

212-639-6840

Call if you have questions about [anesthesia](#).

### **Blood Donor Room**

212-639-7643

Call for information if you're interested in [donating blood or platelets](#).

### **Bobst International Center**

332-699-7968

We welcome patients from around the world and [offer many services](#) to help. If you're an international patient, call for help arranging your care.

### **Counseling Center**

[www.msk.org/counseling](http://www.msk.org/counseling)

646-888-0200

Many people find that counseling helps them. Our Counseling Center offers counseling for individuals, couples, families, and groups. We can also prescribe

medicine to help if you feel anxious or depressed. Ask a member of your care team for a referral or call the number above to make an appointment.

## **Food Pantry Program**

646-888-8055

We give food to people in need during their cancer treatment. Talk with a member of your care team or call the number above to learn more.

## **Integrative Medicine Service**

[www.msk.org/integrativemedicine](http://www.msk.org/integrativemedicine)

Our Integrative Medicine Service offers many services to complement (go along with) traditional medical care. For example, we offer music therapy, mind/body therapies, dance and movement therapy, yoga, and touch therapy. Call 646-449-1010 to make an appointment for these services.

You can also schedule a consultation with a healthcare provider in the Integrative Medicine Service. They'll work with you to make a plan for creating a healthy lifestyle and managing side effects. Call 646-608-8550 to make an appointment for a consultation.

## **MSK Library**

[library.mskcc.org](http://library.mskcc.org)

212-639-7439

You can visit our library website or call to talk with the

library reference staff. They can help you find more information about a type of cancer. You can also visit the library's [Patient and Health Care Consumer Education Guide](#).

## **Nutrition Services**

[www.msk.org/nutrition](http://www.msk.org/nutrition)

212-639-7312

Our Nutrition Service offers nutritional counseling with one of our clinical dietitian nutritionists. Your clinical dietitian nutritionist will talk with you about your eating habits. They can also give advice on what to eat during and after treatment. Ask a member of your care team for a referral or call the number above to make an appointment.

## **Patient and Community Education**

[www.msk.org/pe](http://www.msk.org/pe)

Visit our patient and community education website to search for educational resources, videos, and online programs.

## **Patient Billing**

646-227-3378

Call if you have questions about preauthorization with your insurance company. This is also called preapproval.

## **Patient Representative Office**

212-639-7202

Call if you have questions about the Health Care Proxy



form or concerns about your care.

## **Perioperative Nurse Liaison**

212-639-5935

Call if you have questions about MSK releasing any information while you're having surgery.

## **Private Duty Nurses and Companions**

917-862-6373

You can request private nurses or companions to care for you in the hospital and at home. Call to learn more.

## **Rehabilitation Services**

[www.msk.org/rehabilitation](http://www.msk.org/rehabilitation);

Cancers and cancer treatments can make your body feel weak, stiff, or tight. Some can cause lymphedema (swelling). Our physiatrists (rehabilitation medicine doctors), occupational therapists (OTs), and physical therapists (PTs) can help you get back to your usual activities.

- **Rehabilitation medicine doctors** diagnose and treat problems that affect how you move and do activities. They can design and help coordinate your rehabilitation therapy program, either at MSK or somewhere closer to home. Call Rehabilitation Medicine (Physiatry) at 646-888-1929 to learn more.
- An **OT** can help if you're having trouble doing usual daily

activities. For example, they can recommend tools to help make daily tasks easier. A **PT** can teach you exercises to help build strength and flexibility. Call Rehabilitation Therapy at 646-888-1900 to learn more.

## **Resources for Life After Cancer (RLAC) Program**

646-888-8106

At MSK, care does not end after your treatment. The RLAC Program is for patients and their families who have finished treatment.

This program has many services. We offer seminars, workshops, support groups, and counseling on life after treatment. We can also help with insurance and employment issues.

## **Sexual Health Programs**

Cancer and cancer treatments can affect your sexual health, fertility, or both. MSK's sexual health programs can help you before, during, or after your treatment.

- Our [Female Sexual Medicine and Women's Health Program](#) can help with sexual health problems such as premature menopause or fertility issues. Ask a member of your MSK care team for a referral or call 646-888-5076 to learn more.
- Our [Male Sexual and Reproductive Medicine Program](#) can help with sexual health problems such as erectile

dysfunction (ED). Ask a member of your care team for a referral or call 646-888-6024 to learn more.

## **Social Work**

[www.msk.org/socialwork](http://www.msk.org/socialwork)

212-639-7020

Social workers help patients, families, and friends deal with common issues for people who have cancer. They provide individual counseling and support groups throughout your treatment. They can help you communicate with children and other family members.

Our social workers can also help refer you to community agencies and programs. If you're having trouble paying your bills, they also have information about financial resources. Call the number above to learn more.

## **Spiritual Care**

212-639-5982

Our chaplains (spiritual counselors) are available to listen, help support family members, and pray. They can contact community clergy or faith groups, or simply be a comforting companion and a spiritual presence. Anyone can ask for [spiritual support](#). You do not have to have a religious affiliation (connection to a religion).

MSK's interfaith chapel is located near Memorial Hospital's main lobby. It's open 24 hours a day. If you have an emergency, call 212-639-2000. Ask for the chaplain on

call.

## **Tobacco Treatment Program**

[www.msk.org/tobacco](http://www.msk.org/tobacco)

212-610-0507

If you want to quit smoking, MSK has specialists who can help. Call to learn more.

## **Virtual Programs**

[www.msk.org/vp](http://www.msk.org/vp)

We offer online education and support for patients and caregivers. These are live sessions where you can talk or just listen. You can learn about your diagnosis, what to expect during treatment, and how to prepare for your cancer care.

Sessions are private, free, and led by experts. Visit our website to learn more about Virtual Programs or to register.

## **External support services**

### **American Cancer Society (ACS)**

[www.cancer.org](http://www.cancer.org)

800-ACS-2345 (800-227-2345)

Offers a variety of information and services, including Hope Lodge, a free place for patients and caregivers to stay during cancer treatment.

### **The American Urologic Association Foundation**

866-746-4282

[www.urologyhealth.org](http://www.urologyhealth.org)

## **US TOO**

800-808-7866

[www.ustoo.org](http://www.ustoo.org)

Provides prostate cancer education and support programs and has a monthly newsletter called Hotsheet. Meetings are open to patients, spouses, significant others, interested medical personnel.

## **National Association for Continence**

[www.nafc.org](http://www.nafc.org)

## **National Cancer Institute**

[www.cancer.gov](http://www.cancer.gov)

## **Prostate Cancer Foundation**

[www.pcf.org](http://www.pcf.org)

## **Prostate Cancer Treatment Guidelines for Patients**

[www.nccn.org](http://www.nccn.org) (also available in Spanish)

If you have any questions, contact a member of your care team directly. If you're a patient at MSK and you need to reach a provider after 5 p.m., during the weekend, or on a holiday, call 212-639-2000.

For more resources, visit [www.mskcc.org/pe](http://www.mskcc.org/pe) to search our virtual library.

---

About Your Prostate Ablation Procedure - Last updated on February 8, 2022

All rights owned and reserved by Memorial Sloan Kettering Cancer Center